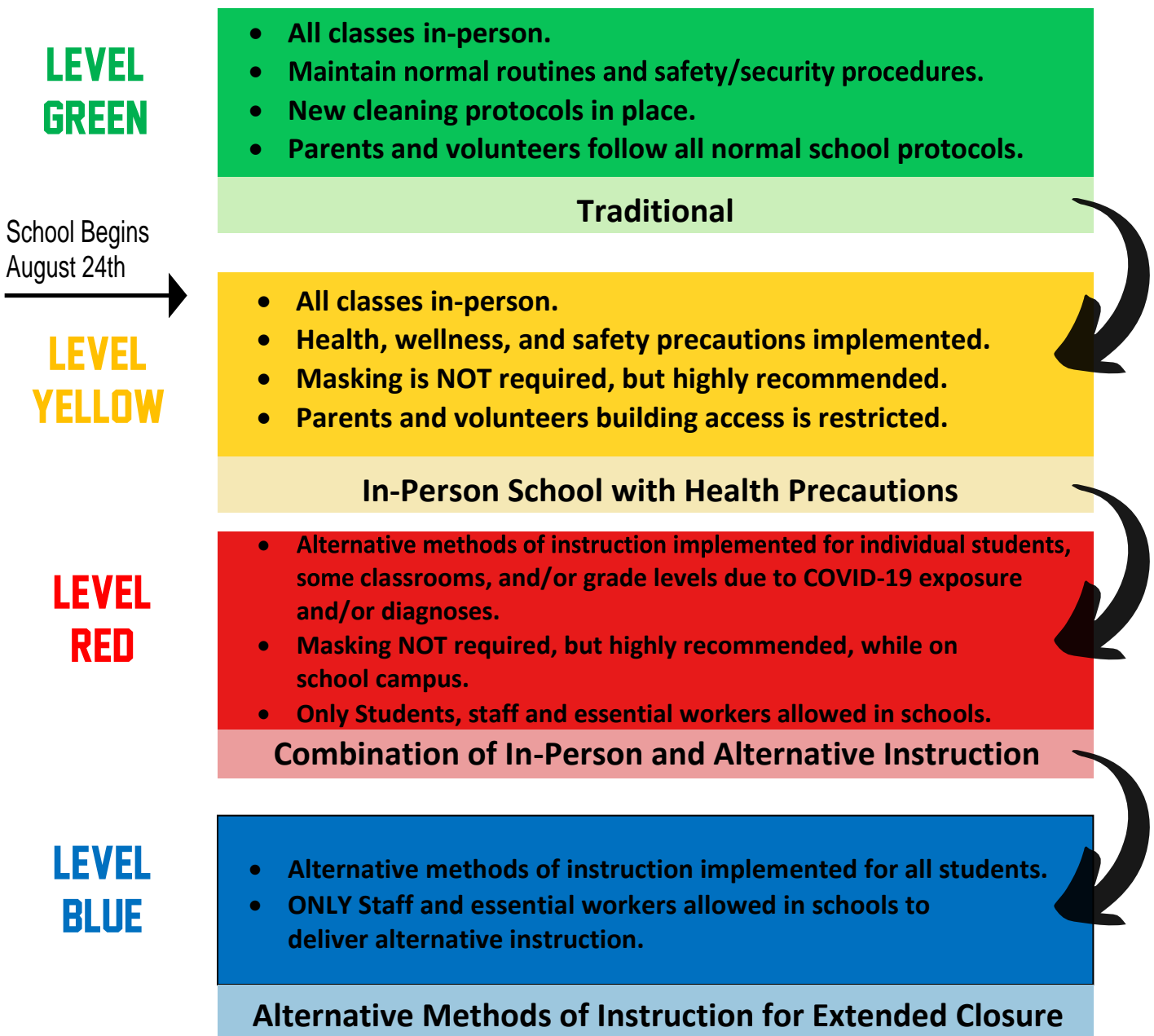




It is the desire of the Stoutland R-II School District for our students to safely return to school as scheduled, beginning August 24<sup>th</sup>. We feel strongly that students benefit much more from education in our classrooms than in a virtual setting. For that reason, we will make every effort possible to allow our students the opportunity to attend school on site.

The District will use a system of color-coded levels to provide students, parents, staff and community members guidelines that define the health, wellness and safety precautions in place. More details are forthcoming as part of our, "Return to Learn 2020" plan that will be posted to the [District Website](#) the week of August 3<sup>rd</sup>.

As of July 31, 2020, the District plans to begin school at the Level Yellow. The District may need to adjust the color level in response to COVID-19.



**NOTE:** Parents of students with existing health conditions requiring accommodations for health and safety should contact Mr. McNabb, K-12 principal at [mcnabbj@stoutlandschools.com](mailto:mcnabbj@stoutlandschools.com) to discuss your needs.